

Urinary Symptom Questionnaire for Neurogenic Bladder-Indwelling Catherization (USQNB-IDC)

Directions—Under each category, please mark each symptom/s you are experiencing. Fill in the total of each symptom category on page 2. Then, follow the flow chart (page 2) to guide your decision-making for your symptoms.

ACTIONABLE

- Feeling feverish
- Abdominal/ suprapubic pain
- Increased tone/ spasticity (not bladder spasms)
- Bladder spasm frequency/discomfort
- Sweating
- Flushing of the chest, neck or face
- Autonomic Dysreflexia (AD) **Spinal Cord Injury ONLY**

_____ Total “Actionable” Symptoms

- If one or more symptoms then consider seeking medical attention for assessment of symptoms

BLADDER

- Blood in urine
- Blood clots in urine
- Urinary urgency
- Incontinence/ urine leakage

_____ Total “Bladder” Symptoms

- If one or more Bladder symptom AND one or more Actionable symptom, then consider seeking medical attention for UTI assessment
- If all four consider seeking medical assessment of bladder function
- If one to three and no other symptoms, self-manage + monitor symptoms

URINE QUALITY

- Worse-smelling urine
- Darker urine
- Cloudier/sediment in urine

_____ Total “Urine Quality” Symptoms

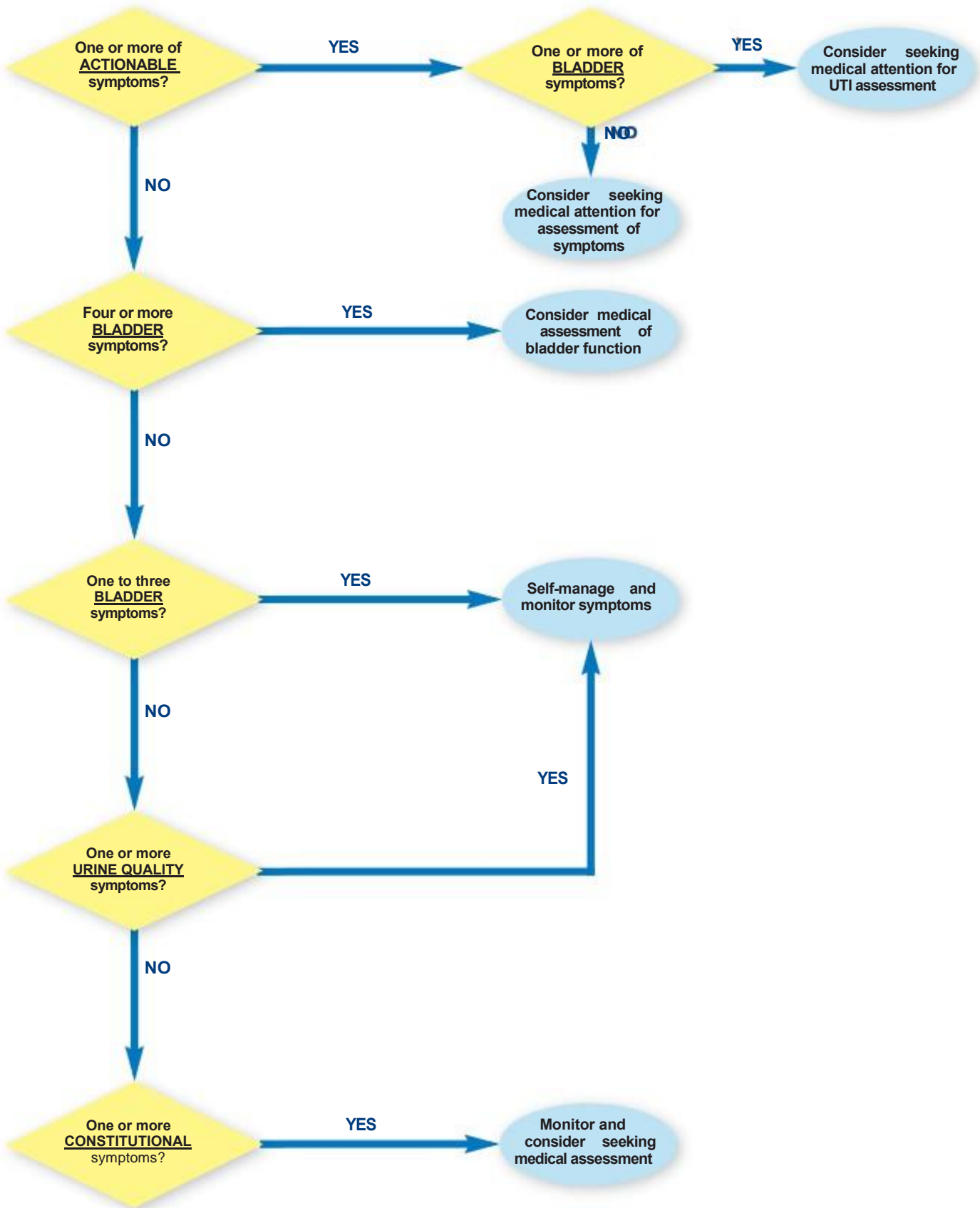
- If one or more and no other symptoms, self manage + monitor symptoms

CONSTITUTIONAL

- Discharge, redness, or sensitivity around catheter site
- Increase or decrease from your usual blood pressure
- Diarrhea
- Numbness, tingling in your extremities
- Sense of burning in the extremities or throughout the body
- Increase in fatigue, lethargy, or weakness
- Generalized abdominal discomfort or bloating
- Irritability, mental slowing/confusion
- Back pain
- Pain below the level of injury

_____ Total “Constitutional” Symptoms

- If one or more and no other symptoms then monitor and consider seeking medical assessment



Symptom Category	Total
Actionable	
Bladder	
Urine Quality	
Constitutional	